



This program is especially created for the  
Oakville North Probus Club and friends

# ENCHANTING DOURO VALLEY

OCTOBER 04 – 15, 2018





## ITINERARY

### ENCHANTING DOURO VALLEY / October 04 – 15, 2018

#### DAY 1 / OCT 04 / DEPART CANADA

We depart from Pearson International Airport tonight for our flight to Lisbon. We would ask you to meet the group at Terminal One, 3 hours prior to departure time or by 6:45 pm. Enjoy your inflight meals as well as complimentary beverages and an onboard entertainment system.

*Oct 04 / AC 876 / Toronto – Frankfurt / depart 9:40pm / arrive 11:10am on Oct 05*

*Oct 05 / LH1168 / Frankfurt – Lisbon / depart 1:15pm / arrive 3:15pm*

#### DAY 2 / OCT 05 / ARRIVE IN LISBON, PORTUGAL

We arrive in Lisbon mid-afternoon where we are met by our coach and local assistant for transfer to the hotel. Portugal, the western-most European country, was one of the primary players in the European Age of Discovery and Exploration. Under the leadership of Prince Henry the Navigator, Portugal took on the principal role during most of the fifteenth century, searching for a route to Asia by sailing south around Africa. In the process, the Portuguese accumulated a wealth of knowledge about navigation and the geography of the Atlantic Ocean. In the last decade of the fifteenth century, Christopher Columbus set out on a westerly course across the Atlantic Ocean searching for an alternative route to the Indies but inadvertently “discovered” a new continent. We have the remainder of our afternoon to relax and then gather together for our welcome dinner at the hotel. (Dinner)

*Accommodation: Hotel Sana Lisboa or similar (3 nights)*



*Rossio Square*

**DAY 3 / OCT 06 / LISBON**

One of Europe's most beautiful cities, Lisbon sprawls across several hills along the Tagus River. See Belem Tower, a fortified 4-story tower made of limestone, and visit the Late Gothic Jerónimos Monastery, the burial place of many Portuguese kings and heroes. We visit Rossio Square and learn how this 19th century historical square was built with typical Portuguese calcada stone to resemble waves of the nearby ocean. From here, follow your guide to the Restauradores Square and see an obelisk rise towards the sky, exemplifying Portugal's ascent to independence from Spain in 1640. The rest of the afternoon is free for you to explore the city at your pace. Perhaps you would enjoy a visit to the Castle of Sao Jorge or the Santa Justa Elevator that overlooks the castle, the river and Rossio Square. *(Breakfast)*

**DAY 4 / OCT 07 / LISBON – SINTRA – LISBON**

Enjoy a morning excursion to Serra de Sintra, one of the loveliest mountain villages in Portugal, a favorite summer residence of the Portuguese royal family for more than 500 years. Long an inspiration for artists and poets, Lord Byron once called it "perhaps the most delightful village in Europe." High up on a rocky peak, you will tour the Castelo da Pena, a wonderful fairy tale castle dating from Portugal's Romantic period. Time for lunch on your own with afternoon return to Lisbon. Dinner at hotel. *(Breakfast and dinner)*

**DAY 5 / OCT 08 / LISBON – FATIMA – PORTO – EMBARKATION**

After breakfast, we leave Lisbon behind as we enjoy a scenic drive through the countryside to Porto. We will stop along the way to spend several hours in Fatima, one of the most important Catholic shrines in the world dedicated to the Virgin Mary. Here, in 1917, she appeared several times to three shepherd children. The last time, on October 13th 1917, there were 70,000 witnesses to the miracle. A marble pillar with a statue of Our Lady marks the exact spot and four million pilgrims make the journey to see it every year. Following our tour, have time to enjoy lunch in this very famous town. We continue travelling to the town of Porto, where our group is welcomed on board the CroisiEurope MS Gil Eanes, for the next 7 nights.



*Belém Tower*



*Castelo da Pena*



The MS Gil Eanes is 262 feet in length and 36 feet wide with a total of 66 cabins. There is a lounge with large picture windows, restaurant, library, gift shop, an elevator and a sun deck with chaise lounges. There is air-conditioning throughout the entire boat and in every cabin, central heating and free onboard Wi-Fi. Cabin amenities include private bathroom with shower, flat-screen TV, hair dryer, safe, and closet. We are welcomed on board for a cocktail with the crew followed by dinner. Experience Porto at its most romantic hour, night, during this evening driving tour of the city. The tour will show you the many beautiful sites of Porto including the floodlit Douro River. *(Breakfast and dinner)*  
*Accommodation: Onboard MS Gil Eanes (7 nights)*

#### **DAY 6 / OCT 09 / PORTO**

Breakfast is an impressive self-serve buffet in the onboard restaurant, which will include pastries, coffee, tea, juice, breads, jams and jellies, a variety of sausages and cold cuts, eggs, fresh fruit, and yogurt. Today, you have a choice between two tours. Enjoy a guided tour of Porto, one of the oldest cities in Europe, whose historic center is listed as a UNESCO World Heritage Site. The second option is to tour Porto via tram, including a visit to the Tram Museum. This is the city that originated and named Port Wine, and gave birth to one of the world history's legendary figures, Prince Henry the Navigator. Sightseeing on either tour today will reveal Porto's 16th century arcaded buildings, baroque churches and the magnificent iron bridge built by French engineer Gustave Eiffel. We enjoy both lunch and dinner on board - 3-course sit down meals prepared by our chefs, and served at set times for all passengers. Since our meals are prepared on a daily basis from fresh ingredients, you will be served a fixed menu of local specialties. Both lunch and dinner meals are paired with excellent complimentary wines. Entertainment tonight features an evening of Fado music, Portugal's signature melancholic music of longing. *(Breakfast, lunch and dinner)*

#### **DAY 7 / OCT 10 / PORTO – REGUA**

Today, you have a choice between two tours. First is an excursion to Guimaraes that brings you to one of the most historic towns in Portugal, a UNESCO World Heritage site. Portugal's history comes alive as you see the city's 10th century castle and Dukes of Braganza Palace. If you prefer, you can join the group that will be enjoying a guided hiking tour along the Douro River. Enjoy some scenic cruising this afternoon through the Douro Valley on our way to Regua. Dinner on board followed by dancing or a stroll through Regua by night. *(Breakfast, lunch and dinner)*



*Palace of the Dukes of Braganza*



*Dom Luís I Bridge*

**DAY 8 / OCT 11 / REGUA – VEGA DE TERRON**

Our shore excursion today is to the town of Vila Real, the capital of the Tras-o-Montes province, a sleepy university town set in a sea of rural tranquility. Vila Real flourished as a result of the wine and port trade, which used to be headquartered here before moving to Porto. The town has long been a popular place to have a second home. The most famous has to be the Palacio do Mateus, used as a holiday home by the Portuguese royal family during the sixteenth and seventeenth centuries. The Palacio do Mateus, which is featured on bottles of well-known Mateus rose wine, was built in 1745 to a design by the fashionable Italian architect, Nicola Nasoni. The palace and gardens are open to the public with tours that take in a strange collection of macabre religious artefacts including a piece of holy fingernail and some saintly eyeballs, apparently bought from the Vatican. The afternoon will be spent cruising to Vega de Terron. Enjoy dinner and an evening of flamenco on board. Flamenco is a Spanish art form made up of three parts: guitar playing, song and dance. Flamenco originated in the southern regions of Spain and is thought to be influenced by many world cultures. Enjoy tonight's presentation. *(Breakfast, lunch and dinner)*

**DAY 9 / OCT 12 / BARCA D'ALVA (SALAMANCA)**

Known as Spain's "golden city," Salamanca is rich in architectural, religious and gastronomic culture and a UNESCO World Heritage Site. Today we tour this city and marvel at the La Casa de las Conchas (house of shells) and the 18th century Plaza Mayor. Both the Old and New Cathedrals of Salamanca are celebrations of Renaissance and Gothic styles. But the city owes its most essential features to the University. The remarkable group of buildings in Gothic, Renaissance, and Baroque styles, which, from the 15th to 18th centuries, rose to the institution that proclaimed itself "Mother of Virtues, Sciences, and the Arts", makes Salamanca an exceptional example of an old university town in the Christian world, such as Oxford and Cambridge. You will also have the option to discover this city today on a bicycle tour as well. Enjoy an evening of entertainment after dinner. *(Breakfast, lunch and dinner)*



Palacio de Mateus



La Casa de las Conchas



**DAY 10 / OCT 13 / BARCA D'ALVA - FERRADOSA – PINHAO**

Relax on board and enjoy stunning views of rugged shoreline, as the ship cruises through the dramatic gorges of the Douro River valley from Barca d'Alva to Pinhoa. Nestled in the heart of wine country along the Douro River, we arrive in the picturesque town of Pinhao, famous for the most beautiful scenic views in Portugal. We disembark this afternoon and join an excursion to taste the wines of Porto. Tonight is our festival gala evening. *(Breakfast, lunch and dinner)*

**DAY 11 / OCT 14 / PINHAO – PORTO**

Today we have an excursion to the ancient and picturesque town of Lamego. Nestled among the terraced slopes of the Douro valley port wine-growing region, and overlooked by an ornate shrine, the town of Lamego is elegant and infused with Baroque style. Atop one of the two hills stands the 13th century keep and a castle 100 years its' senior. The most striking building of Lamego is the sanctuary dedicated to Our Lady of Remedies which stands gracefully above the town. The afternoon will be spent cruising back to Porto. We'll enjoy an evening of traditional entertainment. *(Breakfast, lunch and dinner)*

**DAY 12 / OCT 15 / DISEMBARKATION – DEPART PORTO**

Enjoy breakfast on board before we disembark and say farewell to the MS Gil Eanes. We have a private transfer to the airport for our return flight to Toronto via Frankfurt.

*Oct 15 / LH1177 / Porto – Frankfurt / depart 12:05pm / arrive 3:45pm*

*Oct 15 / AC 877 / Frankfurt – Toronto / depart 5:15pm / arrive 7:30pm*

**END OF TOUR**

*MS Gil Eanes at Douro Valley*

## MS GIL EANES SHIP & DECKPLAN

### CHARACTERISTICS

Year built: 2014/2015  
 Length: 262 feet  
 Width: 36 feet  
 Number of cabins: 66  
 Capacity: 132 passengers  
 Onboard amenities:  
 Lounge with large picture windows, restaurant, library, TV, gift shop, elevator, sun deck with chaise lounges. Air-conditioning throughout entire boat and in each cabin, central heating, free onboard Wi-Fi.

### CABIN DESCRIPTION

Upper deck: 34 double-occupancy cabins  
 Middle deck: 24 double-occupancy cabins  
 Main deck: 8 double-occupancy cabins

### Amenities:

All cabins have bathroom with shower, flat-screen TV, hair dryer, safe, and closet.

### DECK PLAN



*MS Gil Eanes*



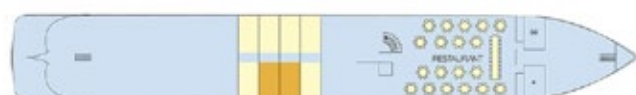
*Sun deck*



*Upper deck*

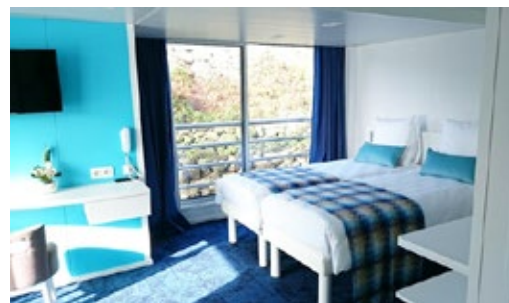


*Middle deck*



*Main deck*

### PHOTO GALLERY



*Cabin*



*Dining room*



*Lounge*



*Sun deck*



## PACKAGE RATE (CAD DOLLARS, PER PERSON)

CABIN CATEGORY	TWIN OCCUPANCY	SINGLE OCCUPANCY
Upper Deck	CAD \$5,320	CAD \$6,570
Middle Deck	CAD \$5,270	CAD \$6,520
Main Deck	CAD \$4,970	CAD \$6,220

## INCLUSIONS

- Roundtrip Air Canada/Lufthansa flights from Toronto to Lisbon and Porto to Toronto
- 3 nights hotel accommodation in Lisbon with daily breakfast
- 2 dinners in Lisbon at hotel, including water, coffee/tea, and one glass of wine
- Porterage at hotel (1 piece per person)
- Land transfers and tours as per itinerary
- 7 nights cruise accommodation and all port taxes included
- Cruise shore excursions including headsets as described in the itinerary
- All onboard meals, include soft drinks, coffee and tea, wine and beer with lunch and dinner
- Open bar onboard (except champagne and other drinks on special drinks menu)
- Free Wi-Fi onboard
- All gratuities

## EXCLUSIONS

- Airport departure taxes. Currently \$580 per person
- Meals not included in the itinerary
- Optional travel insurance

## AIR CREDIT

If you wish to arrange your own air from Toronto to Lisbon and Porto to Toronto, an air credit of CAD\$600 per person will be deducted from the package rate and the airport taxes are not applicable.

Please contact us for air deviation, premium economy or business class upgrade surcharges.

## SPECIAL NOTE

- Names provided at time of booking MUST match exactly your passport
- You must have a passport valid for at least 6 months after your return date from Prague
- If you wish to purchase optional travel insurance with us, it MUST be purchase prior to final payment date. Please contact us for a quotation.

## DEPOSIT AND PAYMENT

At time of booking:

\$750 per person

Second deposit:

\$1,000 per person due Mar 29, 2018

Final payment:

remaining balance due Jun 29, 2018

## CANCELLATION TERMS

Between time of booking & Mar 28, 2018:

\$750 per person

Between Mar 29 & Jun 28, 2018:

\$1,750 per person

Between Jun 29, 2018 & date of departure:

100% of total cost

## PROGRAM DESIGNED IN CONJUNCTION WITH BREGITTE BUYZE.

Email: [bbuyze@hotmail.com](mailto:bbuyze@hotmail.com)

Call 905-827-9775.

To book this program, please complete the Booking Form and email, mail or fax to Nancy Liu at Tour Design.



## TOUR DESIGN

1211 Denison Street, Unit 26,  
Markham, ON. Canada L3R 4B3  
TICO registration #50014865

## NANCY LIU

### CONTACT PERSON

Toll Free: 1-888-923-9183 | Fax: (905) 258 7779

Email: [nliu@glpworldwide.com](mailto:nliu@glpworldwide.com)